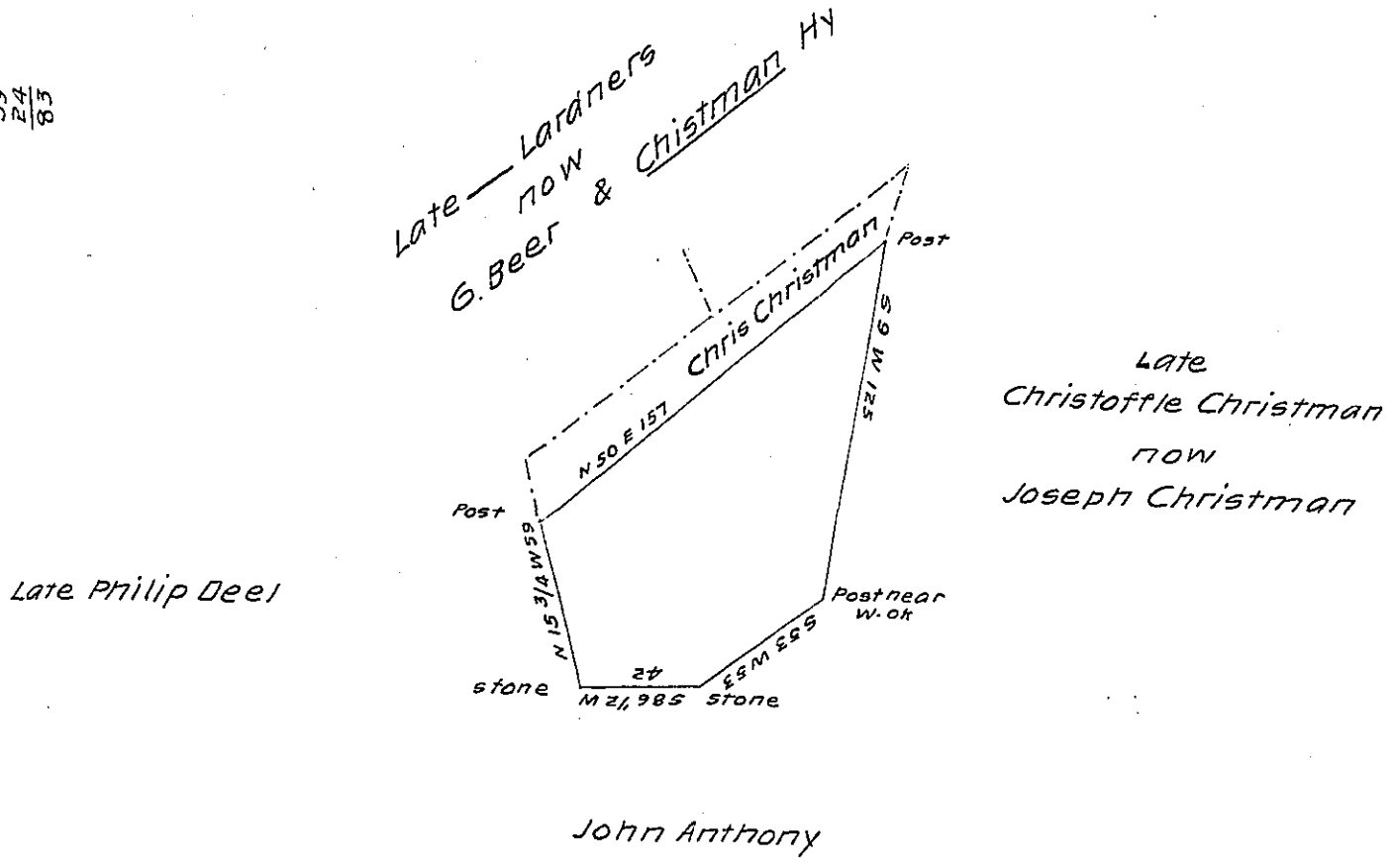


59
24
83



By virtue of a warrant granted to Christoffle Christman snc dated the 28th day - February A.D. 1794. Surveyed June 15th 1838. unto Christoffle Christman the above described tract of land situate in Ross township in the County of Monroe, formerly Chesnut hill township N. County Containing fifty seven acres and the allowance of six Per cent for roads.

Jonas Hanna D.S.

To John Taylor Esquire
Surveyor General.

The Tract market off with dotted Lines is taken up in the same name and ^{they} are to go in one patent but by a different Warrant taken up

IN TESTIMONY that the above is a copy of the original remaining on file in the Department of Internal Affairs of Pennsylvania, made conformably to an Act of Assembly approved the 16th day of February, 1833, I have hereunto set my Hand and caused the Seal of said Department to be affixed at Harrisburg, this twenty-eighth day of June 1904

George D. Brown
Secretary of Internal Affairs.